



PUTTERILLS

est. 1992



£1,350 PCM
Essex Road
Stevenage, SG1 3EX

PROPERTY SUMMARY

Experience modern living in this stunning one-bedroom apartment, part of an exclusive new-build and refurbished development in the heart of Stevenage's historic Old Town. This property offers an exceptional standard of living, perfectly suited for professionals or couples looking for a sophisticated yet practical home.

Step into a spacious, open-plan living area, where a bespoke, German-inspired kitchen takes centre stage, complete with luxury AEG integrated appliances and elegant finishes. The living and dining spaces are flooded with natural light, thanks to large windows that enhance the airy feel of this beautifully designed apartment. Luxury herringbone flooring runs throughout, complemented by soft grey carpets in the generously sized bedroom for ultimate comfort.

This apartment benefits from communal/private garden space (Yet to be decided), but will be ideal for relaxing outdoors or entertaining guests. It also comes with allocated parking and a dedicated EV charging point, catering to modern, eco-conscious lifestyles. A secure video entry system ensures your safety and convenience, making this apartment as functional as it is stylish.

Located in Stevenage's highly sought-after Old Town, you'll find a unique blend of historic charm and contemporary amenities. Explore cobbled streets lined with boutique shops, cafes, and

1



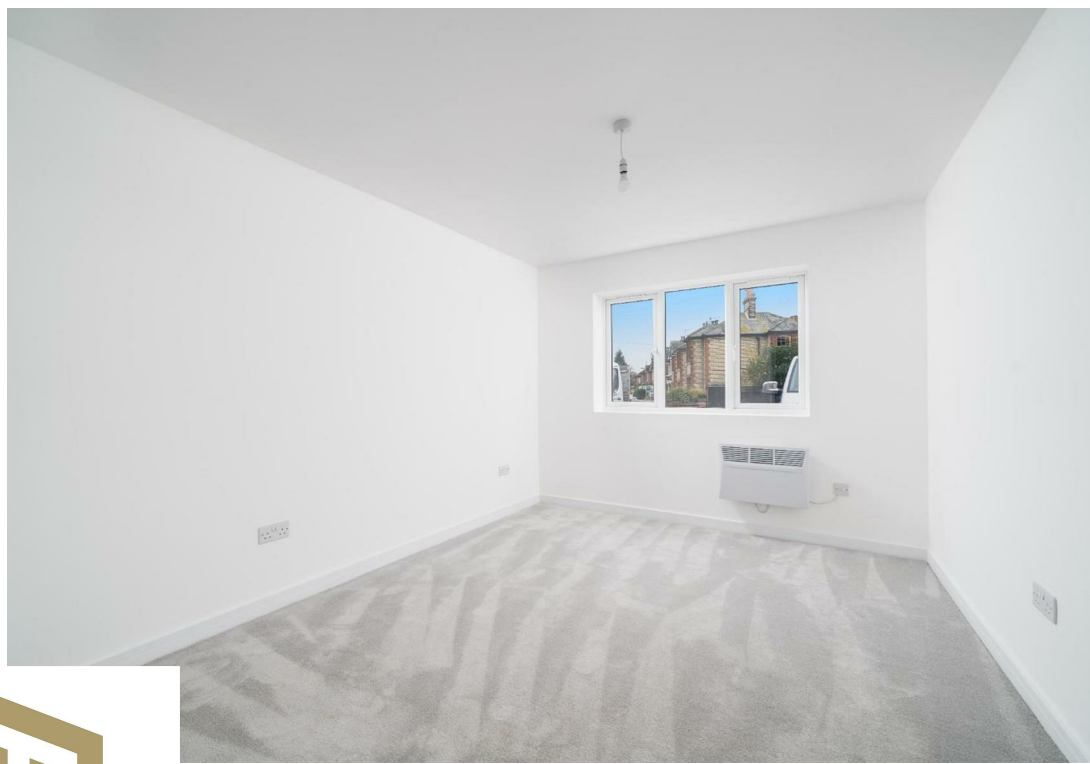
1



nut









LOCAL AUTHORITY


TENURE

COUNCIL TAX BAND

New Build

VIEWINGS

By prior appointment only

Energy Efficiency Rating		
	Current	Potential
Very energy efficient - lower running costs		
(92 plus) A		
(81-91) B		
(69-80) C		
(55-68) D		
(39-54) E		
(21-38) F		
(1-20) G		
Not energy efficient - higher running costs		
England & Wales		EU Directive 2002/91/EC 

Agents Note: Whilst every care has been taken to prepare these particulars, they are for guidance purposes only. All measurements are approximate and are for general guidance purposes only and whilst every care has been taken to ensure their accuracy, they should not be relied upon and potential buyers/tenants are advised to recheck the measurements



OFFICE ADDRESS

Putterills Lettings
123 London Road
Knebworth
SG3 6EX

OFFICE DETAILS

01462 419333
lettings@putterills.co.uk
www.putterills.co.uk